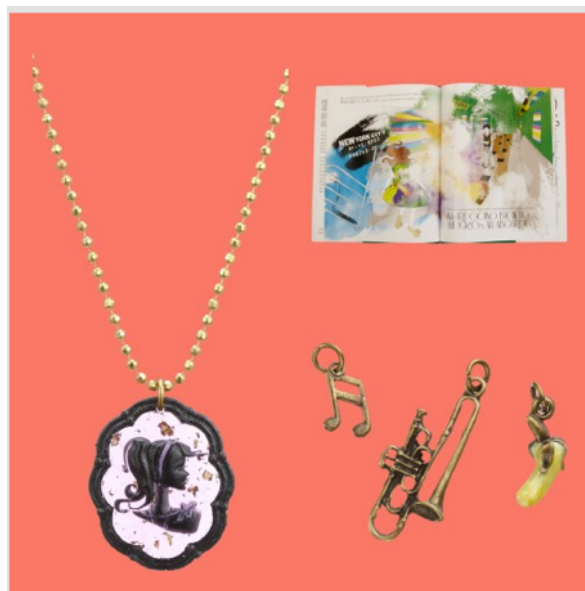


THE SUPER-ADVENTURES OF
SOPHIE

Lulu Frost For Sophie And The City: Jewelry Collaboration And New Book Launch



Just in time for the holidays, *The Super Adventures of Sophie and the City: Grand Central Escapades*, was recently launched. As the second title in Kelly Florio Kasouf's self-published Sophie series, *Grand Central Escapades* follows Sophie on another fantastical adventure in NYC – on her very first trip to Grand Central Station, Sophie meets Henry, a charming paperboy who takes her on a magical train ride back to the 1920s. From flappers to jazz musicians to fashion designers like Dior and Lanvin, **Sophie** learns what life was real like during this era...but it is her trip to Ellis Island that teaches her the true meaning of family and courage where she recognizes her great great grandmother by spotting her wearing the family cameo. The book retails for \$30 and is available exclusively at Barneys through the holidays.



To further bring the story to life, this season Kelly has collaborated with jewelry designer Lisa Salzer of Lulu Frost to create a **Lulu Frost for Sophie and the City cameo necklace** to celebrate the debut of the book. Crafted in a vibrant purple and gold resin with a handdrawn silhouette of Sophie, the Lulu Frost for Sophie and the City cameo necklace is accompanied by **Lulu Frost for Sophie and the City charm suites that draw from the Grand Central Escapades story line, aptly named Divine Deco, Roaring Tempo and Gilded Glam**. Think American Girl but with real designers! The necklace retails for \$78 and the charm suites, comprised of 3 charms each, will retail for \$45. All are also available on Barneys online and will be in-store this week.